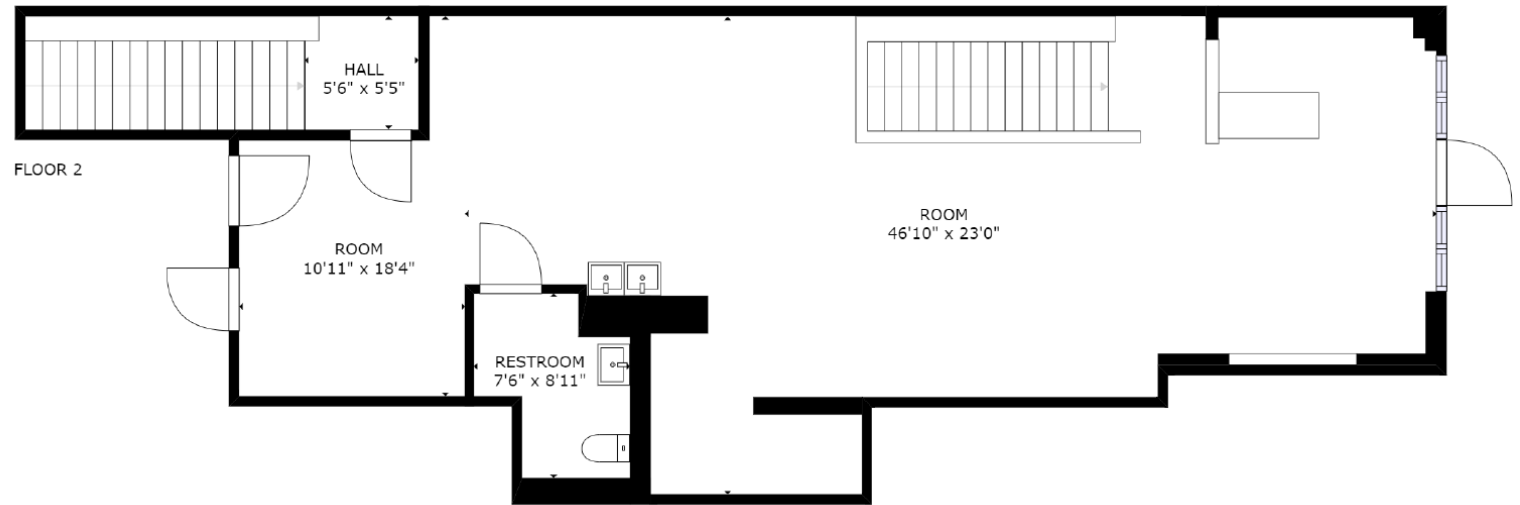
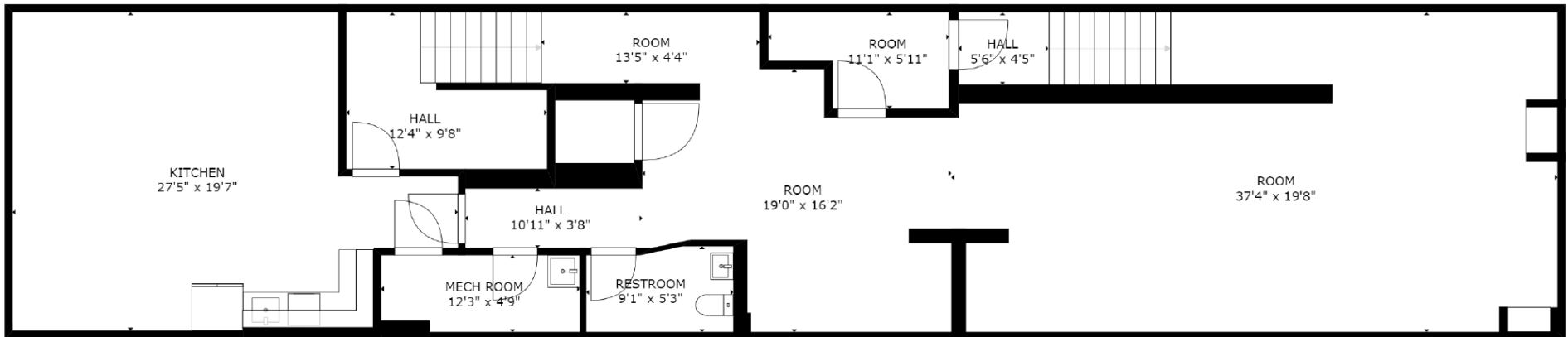


## Floorplan for Southport FUNDamentals at 3827 N. Southport in Chicago

Main Floor – 1165 Sq. Ft. lit by natural light [Reception Area, The Living Room, Zen Zone, Restroom with Changing Table, Costume Room]



Lower Level – 1866 Sq. Ft. [The Big Playroom, The Nook, Lower Level Zen Zone, Restroom with Changing Table, The Multipurpose Room]



*Sizes and dimensions are approximate, actual may vary*